

SAFETY & SECURITY

Sector Education and Training Authority



VeriDataNet

Edu.Dex Data Validation Utility

Installation Manual

Praxis Computing
February 2007

Contact: **Kirstin Barth**
 011 484-0900
 kirstinb@praxis.co.za



Table of contents

1	Introduction to Edu.Dex	2
2	System requirements	2
2.1	Operational System Hardware Requirements.....	2
2.2	Operational Support Software Requirements	2
3	Installing Edu.Dex.....	3

1 Introduction to Edu.Dex

The Edu.Dex data validation utility is a custom designed application that ensures that data transmitted within the Education and Training sector of South Africa conforms to the education and training data exchange (Edu.Dex standard) standard.

The primary objective for the development of the Edu.Dex standard is to ensure that any learner registration related data that is transmitted from one information system to another system in batch format complies to the South African Qualifications Authority's (SAQA) National Learner's Records Database (NLRD) Load Specifications.

The NLRD Load Specification has been developed for the transmission of data from an Education and Training Quality Assurance body (ETQA) to the NLRD system. The NLRD Load Specification therefore does not specifically accommodate the transmission of learner registration data from and to other education and training sector stakeholders.

Therefore the secondary objective of the development of the Edu.Dex standard is to provide the Education and Training sector of South Africa with a comprehensive standard, which complies with the NLRD Load Specification standard, for the transmission of learner registration data between all Education and Training sector stakeholders.

2 System requirements

2.1 Operational System Hardware Requirements

The Edu.Dex software application has been developed to function on a PC with the following minimum system specifications:

- Pentium III
- 128 MB RAM
- 1GB of free hard disk space
- Connection to a suitable laser or inkjet printer
- Video resolution of 800 x 600

2.2 Operational Support Software Requirements

The Edu.Dex software application will operate within the Windows 98, Windows NT 4, Windows 2000 and Windows XP operating systems

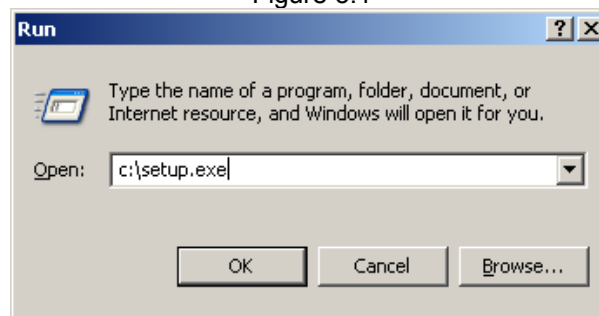
The EduDex software application does not require the installation of any other third party software applications.

3 Installing Edu.Dex

The installation of the Edu.Dex data validation utility is performed from the CD-ROM supplied.

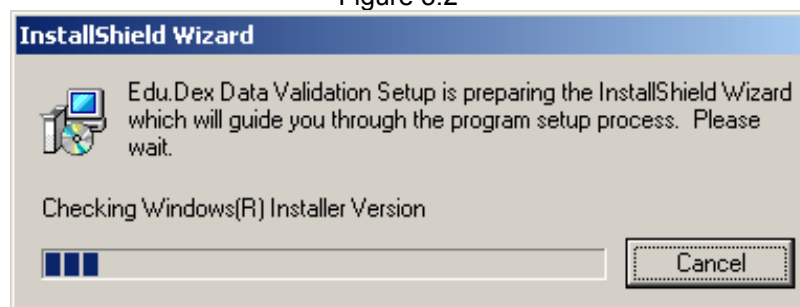
- **Close all other software** programs before starting the installation.
- Place the Edu.Dex installation disk into the appropriate disk drive.
- Choose **Run** from the **Start** menu and type the **drive letter** that contains the disk and type **Setup.exe**. (See Figure 3.1)

Figure 3.1



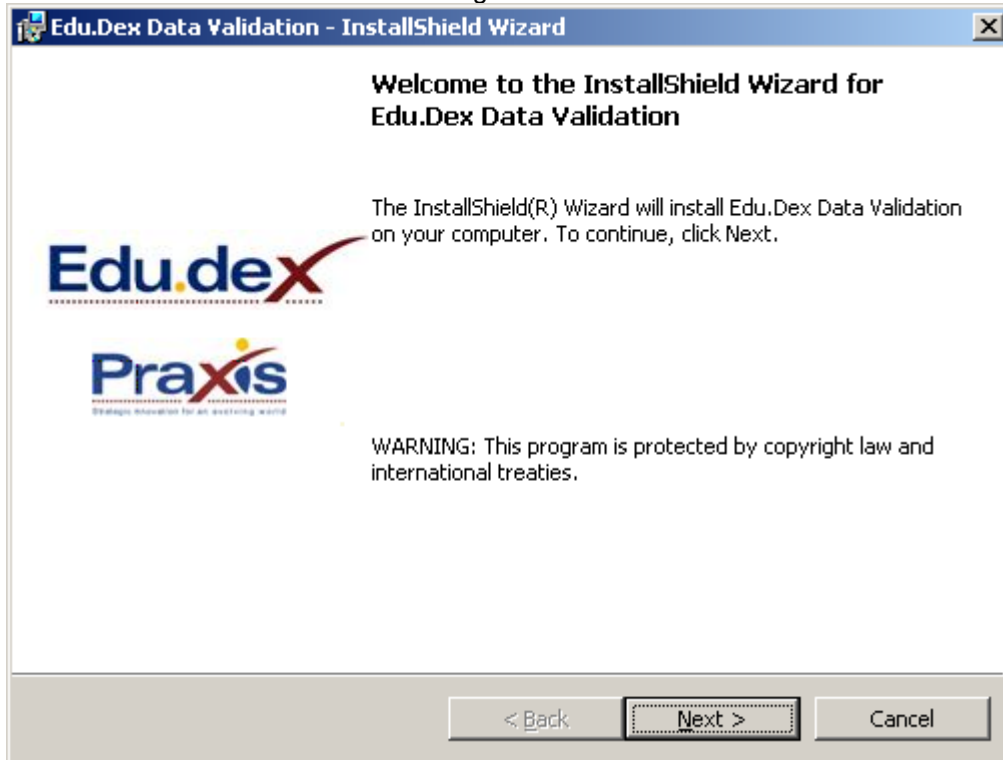
This will activate InstallShield as shown in Figure 3.2. The wizard will perform certain system checks, including a check that determines the version of your Windows Installer, and a check to determine whether your system has the required data access components installed. If your Windows Installer is a later version than the one supplied, the wizard will install the newer version. Additionally, the wizard will install the required data access components should your system not have them available.

Figure 3.2



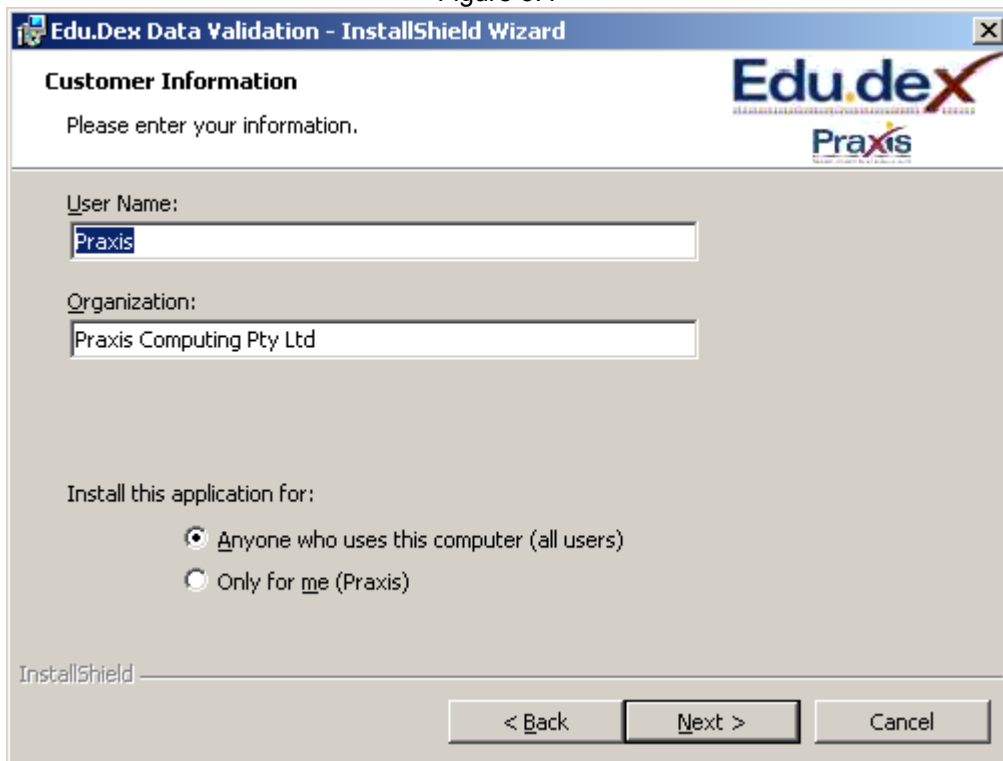
The Edu.Dex data validation utility installation has started once you see the screen shown in Figure 3.3. Click on the next button to continue with the installation.

Figure 3.3



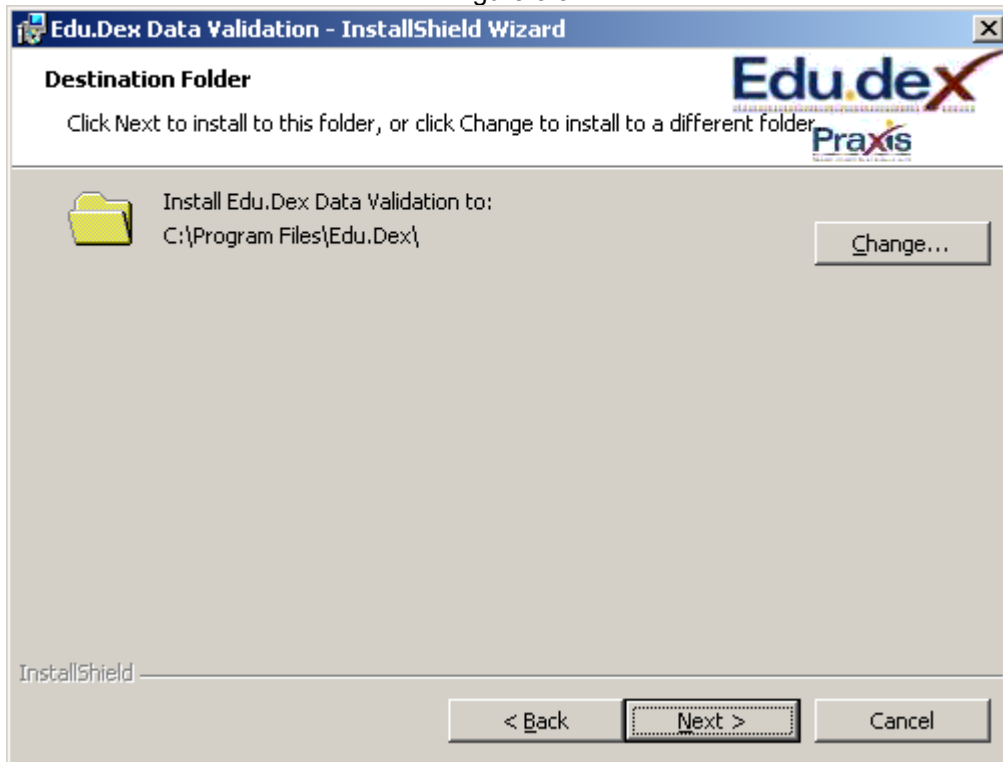
Enter your information into the User Name and Organisation blocks. Click on the next button to continue with the installation (see Figure 3.4).

Figure 3.4



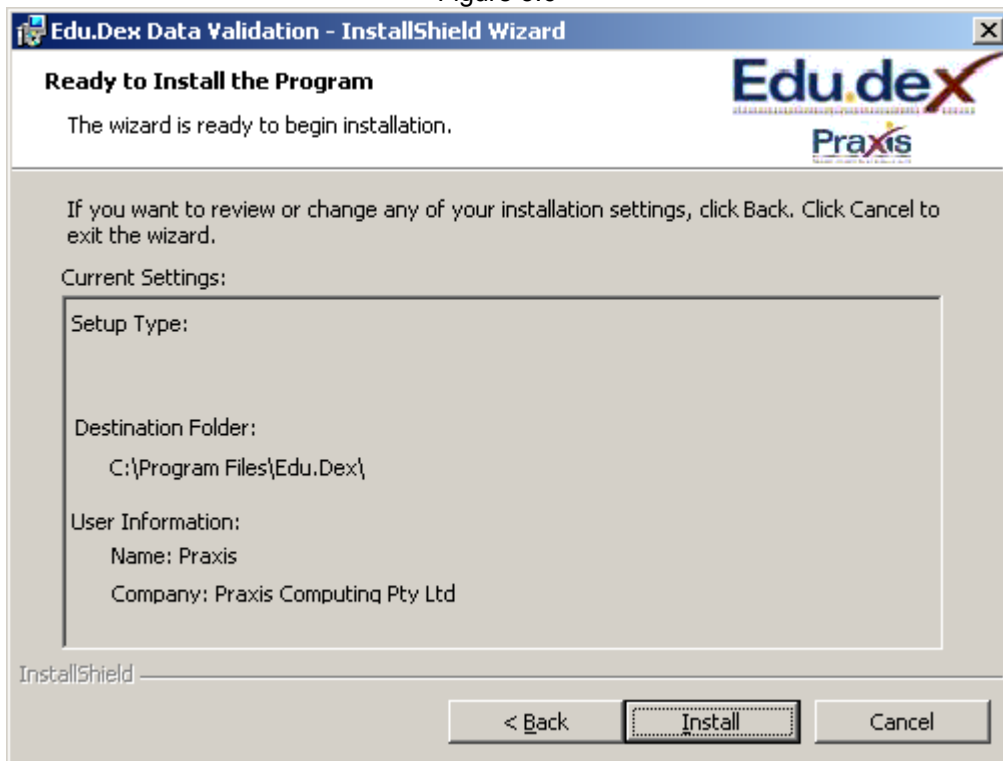
The default installation folder for the Edu.Dex data validation utility is C:\Program Files\Edu.Dex. To change the destination folder, click the Change button and follow the instructions. Click on the next button to continue with the installation (see Figure 3.5).

Figure 3.5



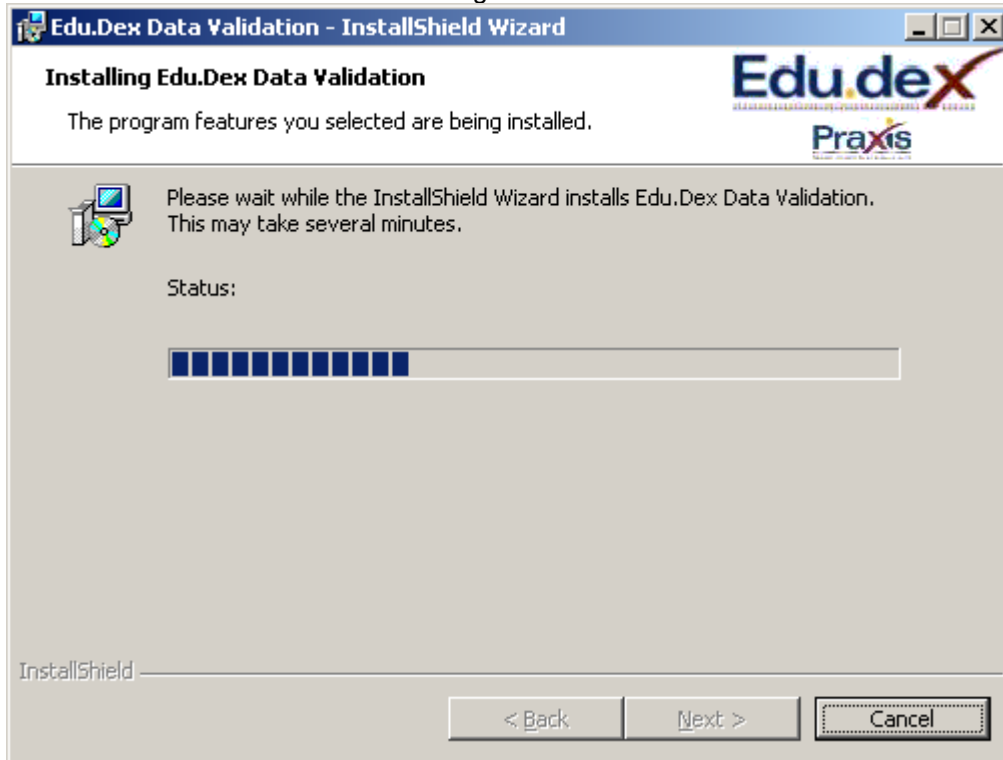
The wizard will display the installation settings you have selected. Click on the Install button to continue with the installation (see Figure 3.6)

Figure 3.6



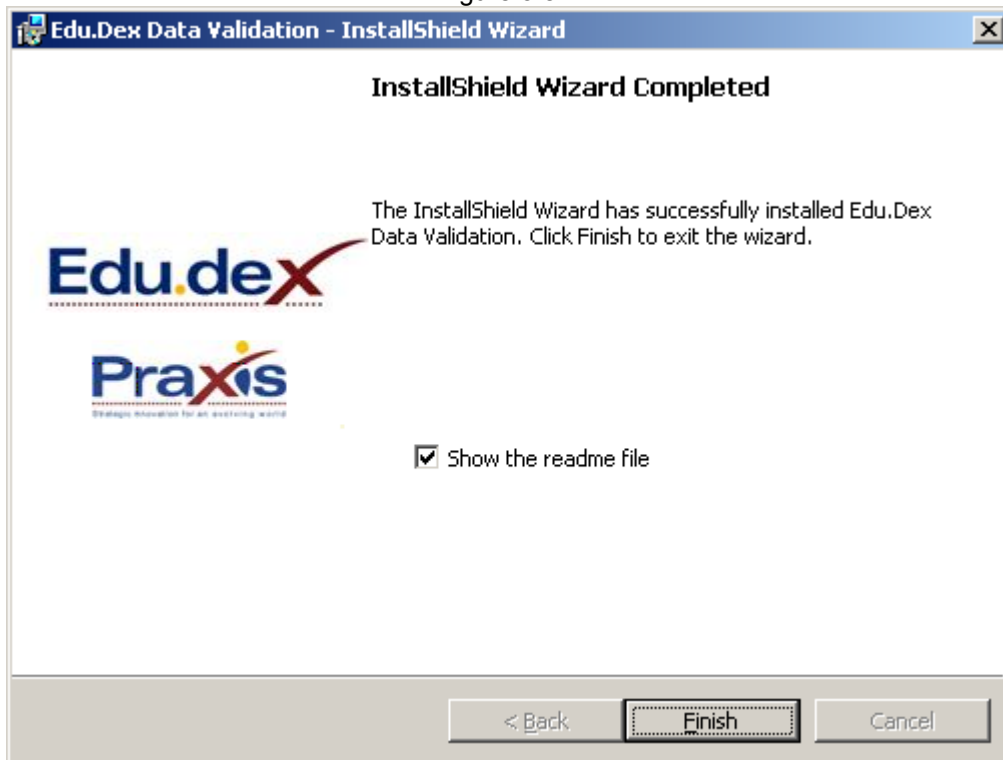
The Edu.Dex utility application will now be installed (see Figure 3.7).

Figure 3.7



Once the installation process has been completed you may select to view the read me file by selecting the "Show the read me file" option. Click on finish to complete the installation (see Figure 3.8).

Figure 3.8



If prompted to do so, reboot your computer after the installation has completed. The Edu.Dex data validation utility has now been installed successfully.